

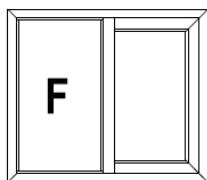
The logo for D.F.C. serramenti features a stylized square icon on the left, composed of a dark blue square with a white square inside, and a green square to its right. To the right of the icon, the text 'D.F.C.' is written in a bold, green, sans-serif font, and 'serramenti' is written below it in a dark blue, sans-serif font.

D.F.C.
serramenti

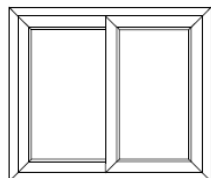
NC-S 120 STH

NC-S 120 STH

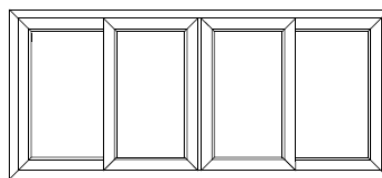
Tipologie realizzabili



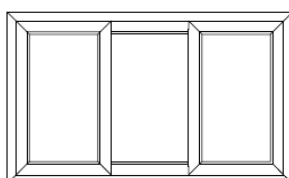
1 anta con
laterale fisso



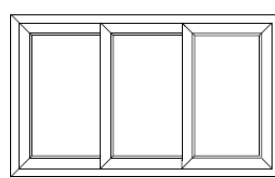
2 ante
su 2 vie



4 ante su 2 vie



3 ante su 2 vie



3 ante su 3 vie

Caratteristiche principali

Telaio fisso	Telaio mobile	Spessore vetri	Peso Massimo anta
115 mm	45 mm	Da 21 a 30 mm	200 kg

Trasmittanza termica

Uf (w/m²K): 2,6÷3,9 a seconda del nodo considerato

Prestazioni di tenuta

Tenuta all'acqua (EN 1027 – EN 12208)

Classe **8A**

Permeabilità all'aria (EN 1026 – EN 12207)

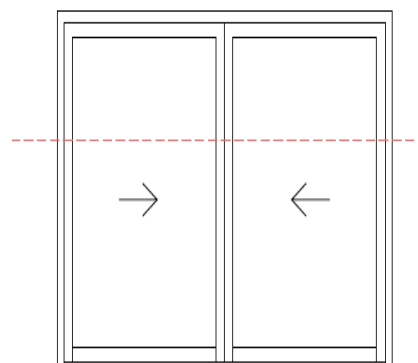
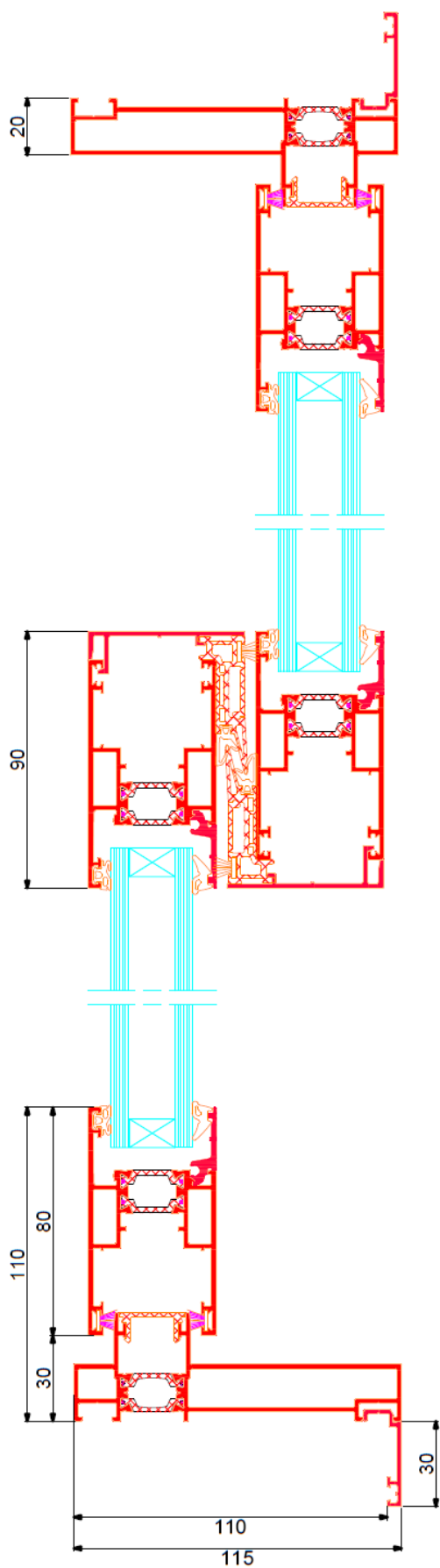
Classe **3**

Resistenza al vento (EN 12211 – EN 12210)

Classe **3C**

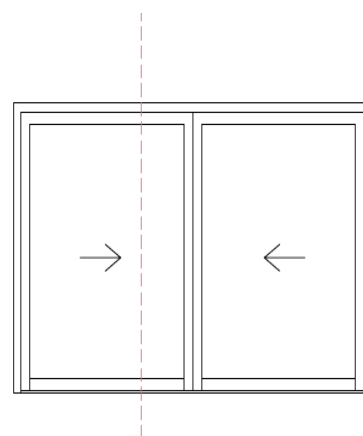
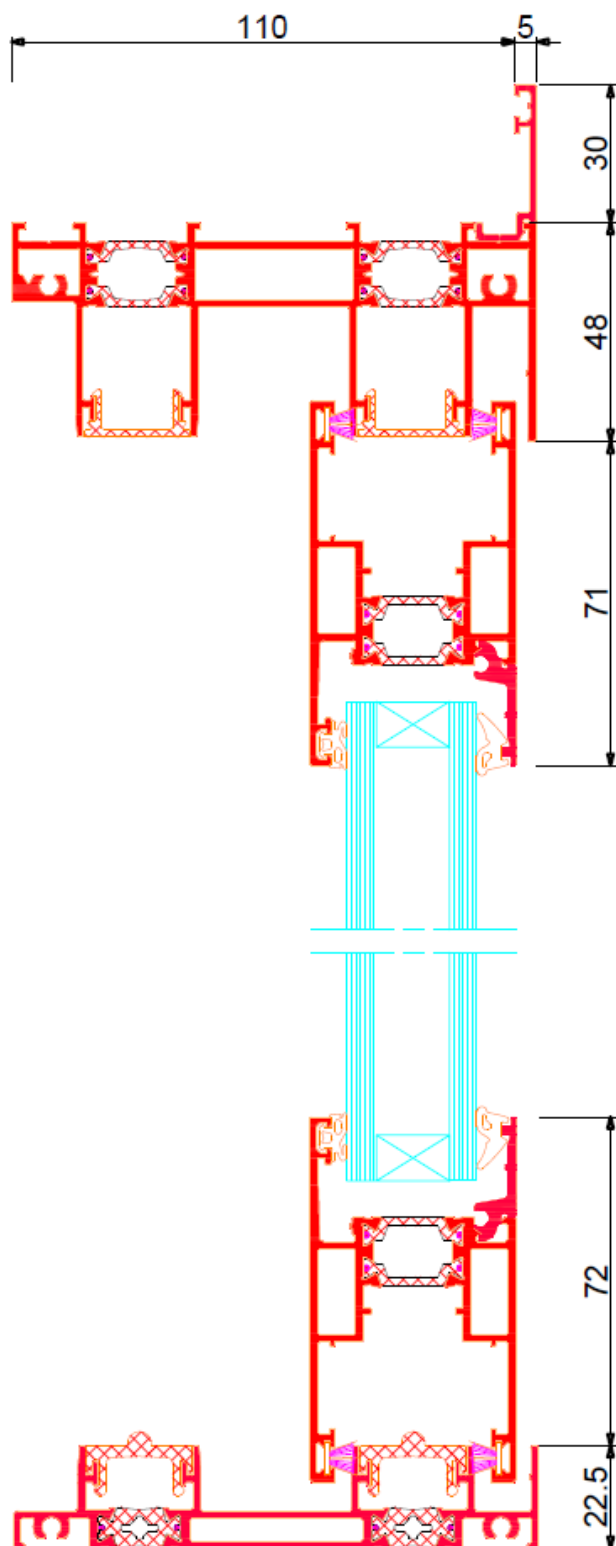


SEZIONE ORIZZONTALE 120 STH





SEZIONE VERTICALE 120 STH





*Tel. 0175/257530
Whatsapp. 350/5784875*

*info@dfcserramenti.it
ordini@dfcserramenti.it
preventivi@dfcserramenti.it*

*Via Vecchia della Valle, 40
REVELLO (CN)*

www.dfcserramenti.it